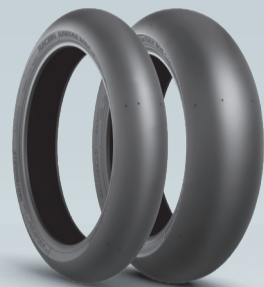


BRIDGESTONE

TRACK USE: RECOMMENDED TYRE PRESSURES BY CATEGORY

TECHNICAL DATA SHEET
VERSION: 04/2023



Categ	Type	Pattern	Size	Compound	Measured Rim (inch)	Ideal Rim (inch)	Authorized Rim (inch)	Overall Diameter (mm)	Tread Width (mm)	*Pressure Range Cold (bar)	*Pressure Range Hot*** (bar)	*Target Pressure Hot*** (bar)		
GP3 - S80 - S125	DRY SLICK	V02F	90/580 R 17	Soft	2.50	2.50	2.15~2.50	576	87		1.9 - 2.1	2.0		
		V02F	90/580 R 17	Medium	2.50	2.50	2.15~2.50	576	87		1.9 - 2.1	2.0		
		V02R	120/600 R 17	Soft	3.50	3.50	2.75~3.50	602	113		1.8 - 2.1	2.0		
		V02R	120/600 R 17	Medium	3.50	3.50	2.75~3.50	602	113		1.8 - 2.1	2.0		
	WET	W01F	90/580 R 17	YEK	2.50	2.50	2.15~2.50	578	91	1.9 - 2.1 **				
		W01R	120/595 R 17	YEK	3.50	3.50	2.75~3.50	598	113	2.0 - 2.1 **				
SSP 300 - 400 - 500	DRY GRO	R11F	110/70 R 17 54H	Medium	3.00	3.00	2.75~3.50	592	109		2.0 - 2.2	2.1		
		R11R	140/70 R 17 66H	Medium	3.50	4.00	3.50~4.50	626	142		1.9 - 2.2	2.0		
		R11R	150/60 R 17 66H	Medium	4.00	4.00	4.00~4.50	619	154		1.9 - 2.2	2.0		
	WET	W01F	110/590 R 17	YEK	2.75	3.00	2.50~3.00	596	106	1.9 - 2.2 **				
		W01F	140/620 R 17	YEK	4.00	4.00	3.50~4.50	623	141	2.0 - 2.2 **				
	MINI / SUPERTWIN - MONO	DRY GRO	R11F	120/70 R 17 58V	Soft	3.50	3.50	3.00~3.50	604	119		2.15 - 2.35	2.25	
R11F			120/70 R 17 58V	Medium	3.50	3.50	3.00~3.50	604	119		2.15 - 2.35	2.25		
R11R			160/60 R 17 69V	Medium	4.50	4.50	4.50~5.00	633	162		1.9 - 2.1	2.0		
R11R			180/55 R 17 73V	Medium	5.50	5.50	5.50~6.00	640	179		1.75 - 1.95	1.8		
WET		W01F	120/600 R 17	YEK	3.50	3.50	3.50~3.75	606	120	2.1 - 2.3 **				
		W01R	165/630 R 17	YEK	5.00	5.00	4.50~5.50	633	165	2.0 - 2.3 **				
		E08Z	180/640 R 17	YEK	6.00	5.50	5.50~6.25	644	177	2.0 - 2.3 **				
		W01R	190/650 R 17	YEK	6.00	6.00	5.50~6.25	649	188	2.0 - 2.3 **				
		SST/SSP 600 - 750	DRY SLICK	V02F	120/605 R 17	NS SOFT	3.50	3.50	3.50~3.75	606	114		2.30 - 2.45	2.40
				V02F	120/605 R 17	NS MEDIUM	3.50	3.50	3.50~3.75	606	114		2.30 - 2.45	2.40
V02R	180/655 R 17			3LC X/S	5.50	5.50	5.50~6.00	655	189		1.6 - 1.75	1.70		
V02R	180/655 R 17			Soft	5.50	5.50	5.50~6.00	655	189		1.6 - 1.75	1.70		
DRY GROOVED	R11F		120/70 R 17 58V	Soft	3.50	3.50	3.00~3.50	604	119		2.15 - 2.35	2.25		
	R11F		120/70 R 17 58V	Medium	3.50	3.50	3.00~3.50	604	119		2.15 - 2.35	2.25		
	R11R		190/55 R 17 75V	Soft*19	6.00	5.50	5.5~6.00	651	187		1.7 - 1.9	1.75		
	R11R		190/55 R 17 75V	Medium	6.00	5.50	5.5~6.00	651	187		1.7 - 1.9	1.75		
	R11R		200/55 R 17 78V	Soft*19	6.25	6.00	5.5~6.25	655	196		1.6 - 1.8	1.65		
	R11R		200/55 R 17 78V	Medium	6.25	6.00	5.5~6.25	655	196		1.6 - 1.8	1.65		
WET	W01F	120/600 R 17	YEK	3.50	3.50	3.50~3.75	606	120	2.1 - 2.3 **					
	E08Z	180/640 R 17	YEK	6.00	5.50	5.50~6.25	644	177	2.0 - 2.3 **					
	W01R	190/650 R 17	YEK	6.00	6.00	5.50~6.25	649	188	2.0 - 2.3 **					
STT/SBK 1000	DRY SLICK	V02F	120/605 R 17	NS SOFT	3.50	3.50	3.50~3.75	606	114		2.30 - 2.45	2.4		
		V02F	120/605 R 17	NS MEDIUM	3.50	3.50	3.50~3.75	606	114		2.30 - 2.45	2.4		
		V02R	200/660 R 17	NS 3LC X/S	6.00	6.00	6.00~6.25	662	195		1.7 - 1.9	1.85		
		V02R	200/660 R 17	NS SOFT	6.00	6.00	6.00~6.25	662	195		1.7 - 1.9	1.85		
	DRY GRO	R11F	120/70 R 17 58V	Soft	3.50	3.50	3.00~3.50	604	119		2.15 - 2.35	2.25		
		R11F	120/70 R 17 58V	Medium	3.50	3.50	3.00~3.50	604	119		2.15 - 2.35	2.25		
		R11R	200/55 R 17 78V	Soft	6.25	6.00	5.5~6.25	655	196		1.6 - 1.8	1.65		
		R11R	200/55 R 17 78V	Medium	6.25	6.00	5.5~6.25	655	196		1.6 - 1.8	1.65		
	WET	W01F	120/600 R 17	YEK	3.50	3.50	3.50~3.75	606	120	2.1 - 2.3 **				
		W01R	190/650 R 17	YEK	6.00	6.00	5.50~6.25	649	188	2.0 - 2.3 **				
CLASSIC	DRY GRO	CR11F	110/80 R 18	-	2.50	2.50	2.50~3.00	633	113	2.1 - 2.3	2.4 - 2.7	2.5		
	WET	CR11R	150/65 R 18	-	4.00	4.00	4.00~4.50	653	147	1.8 - 2.1	2.3 - 2.6	2.4		

! The pressures are indicators only. You still need to adapt them depending on track parameters (surface/temp*), feeling and experience. Failure to operate the motorbike with the appropriate tyre inflation could diminish the performance of your bike and lead to tearing and/or a disfunction in the tyre putting you in danger. Bridgestone accepts no liability for claims related to inappropriate tyre inflation. ** The pressure on Racing Battax Wet tyres needs to be adapted depending on the amount of water on the track as well as the track severity conditions. add +0.1 bar if a lot of water is staying on the track, and decrease with -0.1 bar if the water amount gets less. *** Hot tyre pressures are to be taken directly after pit in, at operating temperature of the tyre.



Categ	Type	Pattern	Size	Compound	Measured Rim (inch)	Ideal Rim (inch)	Authorized Rim (inch)	Overall Diameter (mm)	Tread Width (mm)	*Pressure Range Cold (bar)	*Pressure Range Hot*** (bar)	*Target Pressure Hot*** (bar)
RACING STREET	RACING STREET	RS11F	120/70 ZR 17 58W	Std						2.1		
		RS11R	190/55 ZR 17 75W	Std						1.8		
		RS11R	200/55 ZR 17 78W	Std						1.7		
RACING STREET	RACING STREET	RS10F	110/70 R 17 54H	Std							2.0 - 2.2	2.0
		RS10F	120/70 ZR 17 58W	Std						1.9		
		RS10R	140/70 R 17 66H	Std							2.0 - 2.2	2.0
		RS10R	150/60 R 17 66H	Std							2.0 - 2.2	2.0
		RS10R	180/55 ZR 17 73W	Std						1.8		
		RS10R	190/50 ZR 17 73W	Std						1.8		
HYPERSPORT	HYPERSPORT	S22F	120/70 ZR 17 58W	Std						2.3		
		S22R	180/55 ZR 17 73W	Std						1.8		
		S22R	190/50 ZR 17 73W	Std						1.8		
		S22R	190/55 ZR 17 75W	Std						1.8		
		S22R	200/55 ZR 17 78W	Std						1.7		
		S22R	200/55 ZR 17 78W	Std						1.7		
HYPERSPORT	HYPERSPORT	S21F	120/70 ZR 17 58W	Std						2.1		
		S21R	160/60 ZR 17 69W	Std						2.0		
		S21R	180/55 ZR 17 73W	Std						1.9		
		S21R	190/50 ZR 17 73W	Std						1.9		
		S21R	190/55 ZR 17 75W	Std						1.9		
		S21R	200/55 ZR 17 78W	Std						1.8		
		S21R	200/55 ZR 17 78W	Std						1.8		
HYPERSPORT	HYPERSPORT	BT016F PRO	120/70 ZR 17 58W	Std						2.2		
		BT016R PRO	180/55 ZR 17 73W	Std						2.0		
		BT016R PRO	190/55 ZR 17 75W	Std						2.0		

! Reminder: "Street use" tyres do not have the same optimum operating temperature as racing tyres. (Operating temp. is lower) Therefore it is important to adapt tyre pressure accordingly. Do not lower the pressure too much to prevent early/primitive degradation. "Street use" tyres are not designed for pure track use only and therefore it may only be appropriate for beginners to intermediate experienced riders. The recommended pressures are for Circuit use only. If the tyres are used on the road, please refer to vehicle manufacturer's recommendation.

